

# COLOURS

Colours are key in design. Elegant Nordic White, warm Toffee Brown or mystical Cima.

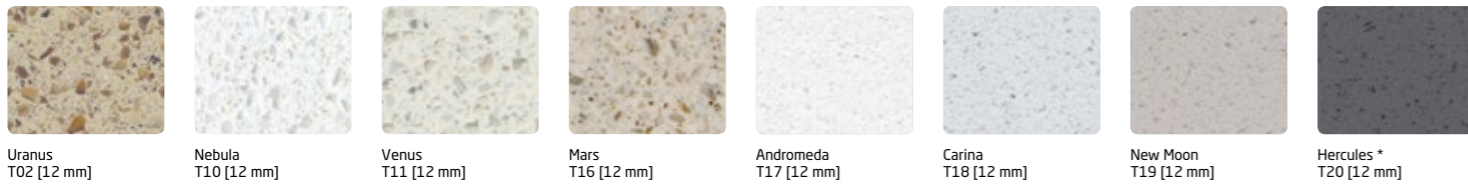
We have whatever colour you want - it's your choice.

## Extra service on demand

If needed, LG Hausys Europe can produce different dimensions and bespoke colours. To learn more about the conditions, please contact us on [www.himacs.eu](http://www.himacs.eu)

## Galaxy

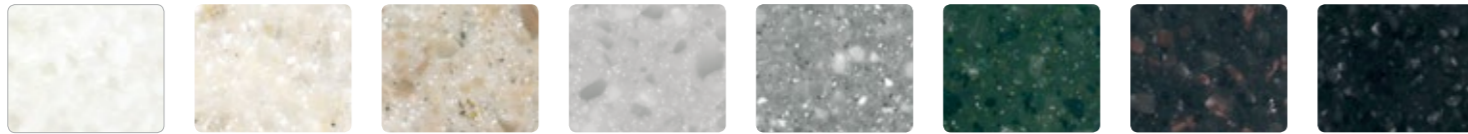
With transparent grains and mother of pearl shimmer, as if from another world.



Uranus T02 [12 mm]   Nebula T10 [12 mm]   Venus T11 [12 mm]   Mars T16 [12 mm]   Andromeda T17 [12 mm]   Carina T18 [12 mm]   New Moon T19 [12 mm]   Hercules \* T20 [12 mm]

## Volcanics

Full of depth and mysticism, akin to a precious natural stone but with all of the advantages of "Natural Acrylic Stone".



Gemini VW01 [12 mm]   Tambora VE01 [12 mm]   Mayon VE23 [12 mm]   Santa Ana VA01 [12 mm]   Frosty VA22 [12 mm]   Maui VG21 [12 mm]   Taos \* VB21 [12 mm]   Cima \* VB02 [12 mm]

## Marmo

You will be captivated by its random veined texture, reminiscent of marble.



Bologna M103 [12 mm]   Roma \* M104 [12 mm]   Verona \* M105 [12 mm]

## Lucent

When combined with precisely positioned light sources, the translucent pastel shades become transformed into dramatic design "highlights".



Opal S302 [12/6 mm], ΔE4   Sapphire S303 [12 mm]   Ruby S304 [12 mm]   Emerald S305 [12 mm]

## Solids

From elegant to extravagant, classic to ultra-contemporary - this is a limitless collection.



Nordic White S033 [19/12 mm] ΔE4   Alpine White S28 [19/12/9/6/3 mm] ΔE3   Diamond White S034 [19/12 mm] ΔE4   Arctic White S06 [19/12/9/6/3 mm]   Ivory White S29 [19/12/9/6 mm] ΔE4   Satin White S01 [19/12/9/6/3 mm]   Cream S09 [19/12/6/3 mm] ΔE3   Nougat Cream S201 [19/12/3 mm]   Almond S02 [19/12 mm], ΔE3   Babylon Beige S102 [19/12 mm]   Concrete Grey \* S103 [19/12 mm]   Carmenere \* S110 [19/12 mm]   Toffee Brown \* S104 [19/12/3 mm]   Marta Grey \* S108 [19/12 mm]   Light Green \* S212 [19/12 mm]   Lemon Squash \* S106 [19/12 mm]   Banana \* S26 [19/12 mm]   Orange \* S27 [19/12 mm]   Florida Orange \* S105 [19/12 mm]   Fiery Red \* S25 [19/12/3 mm]   Festival Pink \* S116 [19/12 mm]   Chiffon S113 [19/12 mm]   Steel Grey \* S109 [19/12 mm]   Grey S05 [19/12/9/6/3 mm]   Midnight Grey \* S117 [19/12 mm]   Sky Blue S203 [19/12 mm]   Deep Indigo \* S115 [19/12 mm]   Dark Night \* S111 [19/12 mm]   Coffee Brown \* S100 [19/12 mm]   Black \* S22 [19/12/9/3 mm]

**19 mm:** S28 Alpine White available in stock. All other solid colours on special order only.

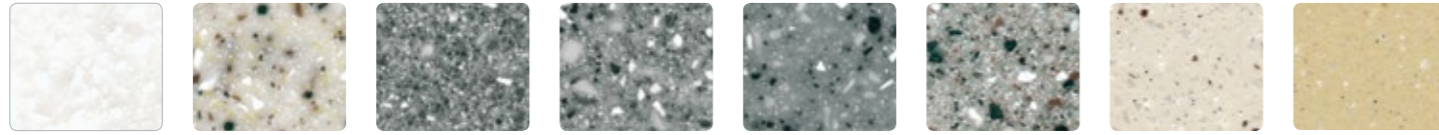
**3 mm:** S28 Alpine White available in stock. S01 Satin White, S06 Arctic White, S09 Cream, S104 Toffee Brown, S05 Grey, S201 Nougat Cream, S25 Fiery Red and S22 Black on special order only.

The basic HI-MACS® material is identical for every colour but it is important to note that darker and more heavily pigmented colours will show dust, scratches, haziness, marks left by hard water and other ordinary wear and tear more noticeably than lighter textured colours. Therefore colours marked with a \* are less suitable for applications that are exposed to extensive surface contact such as worktops located in heavy traffic area as an example. Due to specific characteristics and properties of the Marmo colours, which have a veined effect, special consideration has to be taken into account with jointing and the use of covered up-stands. Veining may vary from sheet to sheet. There may be deviations between the illustrated and actual colours owing to printing techniques. To receive the detailed availability, please contact us at [www.himacs.eu](http://www.himacs.eu).

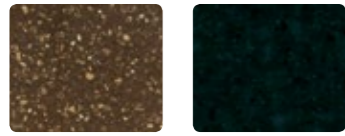
15 HI-MACS® colours are particularly suitable for outdoor applications because of their good UV-resistance. HI-MACS® offers a 5 years warranty on colours' UV resistance for a tolerance of ΔE3 to ΔE4 and loss of gloss over 40%, 10 years on colour leaching and 20 years on colour peeling, swelling or delaminating. The warranty is applicable after the first installation and is only valid for the sheet material; adhesives are excluded. The conditions for this warranty are based on practical experience and on-going tests.

## Granite, Sparkle, Quartz, Sand & Pearl

A huge selection of textures and colours. Natural, elegant and perfect to combine.



Arctic Granite G34 [12/9/6 mm], ΔE3  
 White Granite G05 [12 mm], ΔE4  
 Natural Granite G23 [12/9 mm]  
 Grey Granite G17 [12 mm]  
 Greystone Granite G60 [12 mm]  
 Platinum Granite G07 [12 mm]  
 Grey Crystal G102 [12 mm]  
 Peanut Butter G100 [12 mm]



Mocha Granite G74 [12 mm]  
 Black Granite\* G31 [12/9 mm]



Key Lime\* P100 [12 mm]  
 Kreemy Grey P101 [12 mm]  
 Kold Silver P102 [12 mm]  
 Kandy Pink\* P103 [12 mm]  
 Kanada Violet\* P104 [12 mm]

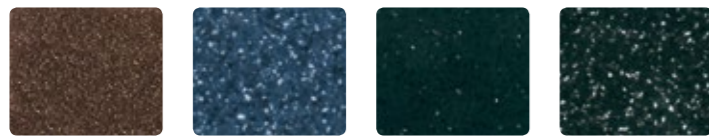
*fantasy*



White Quartz G04 [12/9/6 mm], ΔE4  
 Crystal Beige G101 [12 mm]  
 Moonscape Quartz G58 [12/9 mm]  
 Sea Oat Quartz G38 [12 mm], ΔE3  
 Ivory Quartz G30 [12 mm], ΔE4  
 Allspice Quartz G63 [12 mm]



Lunar Sand G108 [12/9 mm]  
 Pebble Pearl G107 [12/9 mm]  
 Riviera Sand G106 [12/9 mm]  
 Beach Sand G48 [12/9 mm], ΔE3  
 Almond Pearl G08 [12 mm]  
 Desert Sand G01 [12/9 mm]  
 Tapioca Pearl G50 [12 mm]  
 Grey Sand G02 [12/6 mm], ΔE4



Brown Pearl\* G105 [12 mm]  
 Midnight Pearl\* G15 [12 mm]  
 Black Pearl\* G10 [12/6 mm]  
 Black Sand G09 [12 mm]

# A STRONG PARTNER. FOR YOUR BOLDEST IDEAS.

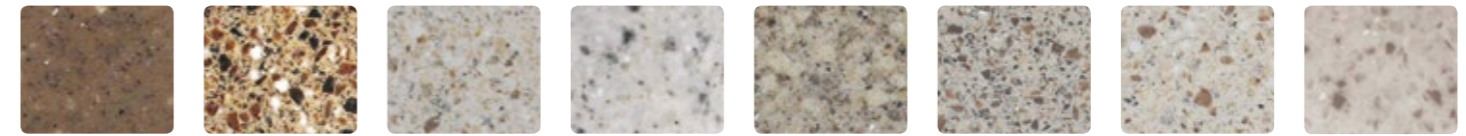
Architects, designers and artisans appreciate HI-MACS® as a competent partner capable of taking on any challenge. We are happy to advise you during the planning and development phase and assist you in the successful implementation of your project. We have experienced representatives throughout Europe who can provide you with active support. Contact us today!

[www.himacs.eu](http://www.himacs.eu)

## Eden

A one-of-a-kind palette with warm natural shades and various grain sizes.

What makes the collection unique: it consists of up to 35% recycled materials.



Cocoa G501R [12 mm] 12% Recycled Content  
 Sugar Maple G510R [12 mm] 35% Recycled Content  
 Poplar G511R [12 mm] 35% Recycled Content  
 Birch Bark G514R [12 mm] 35% Recycled Content  
 Pecan G515R [12 mm] 35% Recycled Content  
 Hickory G516R [12 mm] 35% Recycled Content  
 Mountain Ash G517R [12 mm] 35% Recycled Content  
 Ripe Cotton G518R [12 mm] 12% Recycled Content

The Eden collection is available upon special request. More information about this range and its environmental benefits can be found on pages 8 and 9 of this brochure.

## Scoring eco-credits across the board.

The LEED (Leadership in Energy and Environmental Design) seal is a proven classification system for ecological, resource-saving and sustainable construction. The credit-based certification process rates buildings on a number of different criteria. Opting for HI-MACS® Eden in new construction and renovation projects may provide up to 2 credits in the following LEED categories:

### Indoor Environmental Quality (IEQ)

**LEED IEQ 4.1:** low-emission materials, adhesives and sealants (1 credit)

### Materials & Resources (MR)

**LEED MR 4.1:** materials with more than 10% recycled content (1 credit)

**LEED MR 4.2:** materials with more than 20% recycled content (2 credits)