



DuPont™
CORIAN®
AVANTE®
SINKS



Exclusive UK
Distributors of

DuPont™
CORIAN®



DuPont™
CORIAN®
AVANTE®
SINKS

**Carried as stock items by CD UK
available for immediate delivery**

**Most competitively priced on
the market**

**Suitable for use with boiling
water taps**

**Can be integrated into a
matching Corian® worktop**

**Manufacturer's 10 year limited
installed warranty included**



Exclusive UK
Distributors of

DuPont™
CORIAN®

Corian® Avante® Sinks combine the perfect properties of Corian® with a quality stainless steel base in a modern range ideal for kitchens of the future. This new range, only available from CD UK is the most competitively priced on the market for such a quality product.

They can be integrated into a matching Corian® worktop as an entire continuous surface creating a sensational yet practical look. The non-porous, smooth and durable nature of Corian® is ideal for the kitchen resulting in a hygienic preparation and dining zone.

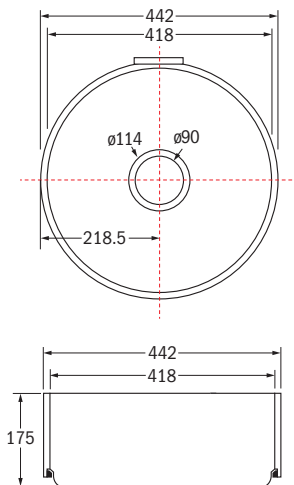
The stainless steel base is heat-proof therefore suitable for hot pots, pans and the trend for boiling water taps.



- > 12mm thick Corian® sink wall with double sided reinforced strip to strengthen the seamless joints for a durable hassle-free outcome.
- > Heatproof stainless steel base with sound elimination coating and anti-vibration pad.
- > Slim overflow hole with anti-blocking Corian® strip, innovative built in overflow system with >0.20L/S flow rate and no other plastic or metal components required inside the sink. **Note the overflow position is fixed for ex-stock items.**
- > Adjustable rigid waste kit included.
- > Available ex stock in Glacier White only. Other Corian® kitchen colours available to order.
- > Corian® Avante® sinks carry the manufacturer's 10 year limited installed warranty.

CAV-SS-12

442 x 175mm



NOTE: Avante® sinks are not guaranteed to colour match with a worktop of the same Corian® colour.

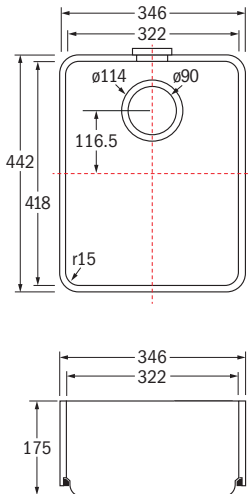
AVANTE® SINK 21



- > 12mm thick Corian® sink wall with double sided reinforced strip to strengthen the seamless joints for a durable hassle-free outcome.
- > Heatproof stainless steel base with sound elimination coating and anti-vibration pad.
- > Slim overflow hole with anti-blocking Corian® strip, innovative built in overflow system with >0.20L/S flow rate and no other plastic or metal components required inside the sink. **Note the overflow position is fixed for ex-stock items.**
- > Adjustable rigid waste kit included.
- > Available ex stock in Glacier White, Cameo White and Designer White. Other Corian® kitchen colours available to order.
- > Corian® Avante® sinks carry the manufacturer's 10 year limited installed warranty.

CAV-SS-21

346 x 442 x 175mm
R15



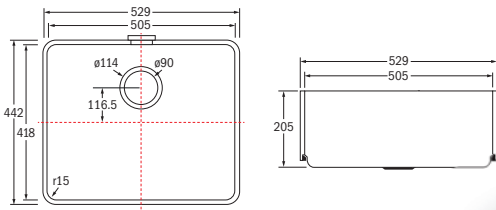
NOTE: Avante® sinks are not guaranteed to colour match with a worktop of the same Corian® colour.



- ▷ 12mm thick Corian® sink wall with double sided reinforced strip to strengthen the seamless joints for a durable hassle-free outcome.
- ▷ Heatproof stainless steel base with sound elimination coating and anti-vibration pad.
- ▷ Slim overflow hole with anti-blocking Corian® strip, innovative built in overflow system with >0.20L/S flow rate and no other plastic or metal components required inside the sink.
Note the overflow position is fixed for ex-stock items.
- ▷ Adjustable rigid waste kit included.
- ▷ Available ex stock in Glacier White, Cameo White and Designer White. Other Corian® kitchen colours available to order.
- ▷ Corian® Avante® sinks carry the manufacturer's 10 year limited installed warranty.

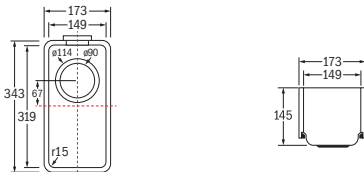
CAV-SS-23

529 x 442 x 205mm
R15



CAV-SS-26

173 x 343 x 145mm
R15



NOTE: Avante® sinks are not guaranteed to colour match with a worktop of the same Corian® colour.

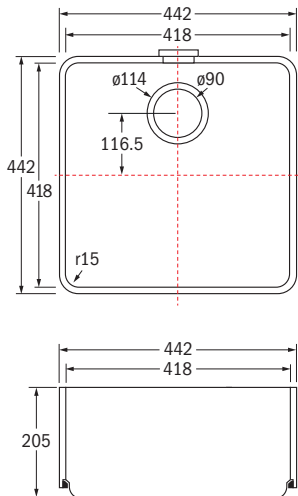
AVANTE® SINK 24



- > 12mm thick Corian® sink wall with double sided reinforced strip to strengthen the seamless joints for a durable hassle-free outcome.
- > Heatproof stainless steel base with sound elimination coating and anti-vibration pad.
- > Slim overflow hole with anti-blocking Corian® strip, innovative built in overflow system with >0.20L/S flow rate and no other plastic or metal components required inside the sink. **Note the overflow position is fixed for ex-stock items.**
- > Adjustable rigid waste kit included.
- > Available ex stock in Glacier White, Cameo White and Designer White. Other Corian® kitchen colours available to order.
- > Corian® Avante® sinks carry the manufacturer's 10 year limited installed warranty.

CAV-SS-24

442 x 442 x 205mm
R15



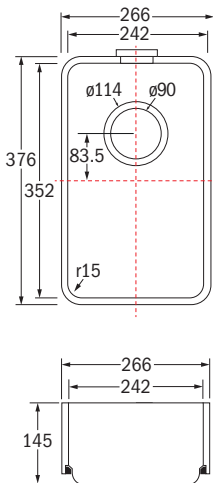
NOTE: Avante® sinks are not guaranteed to colour match with a worktop of the same Corian® colour.



- > 12mm thick Corian® sink wall with double sided reinforced strip to strengthen the seamless joints for a durable hassle-free outcome.
- > Heatproof stainless steel base with sound elimination coating and anti-vibration pad.
- > Slim overflow hole with anti-blocking Corian® strip, innovative built in overflow system with >0.20L/S flow rate and no other plastic or metal components required inside the sink. **Note the overflow position is fixed for ex-stock items.**
- > Adjustable rigid waste kit included.
- > Available ex stock in Glacier White, Cameo White and Designer White. Other Corian® kitchen colours available to order.
- > Corian® Avante® sinks carry the manufacturer's 10 year limited installed warranty.

CAV-SS-25

266 x 376 x 145mm
R15



NOTE: Avante® sinks are not guaranteed to colour match with a worktop of the same Corian® colour.

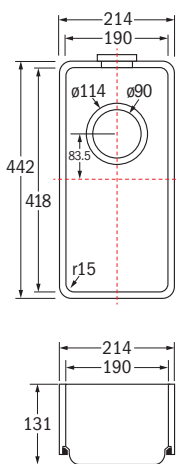
AVANTE® SINK 27



- 12mm thick Corian® sink wall with double sided reinforced strip to strengthen the seamless joints for a durable hassle-free outcome.
- Heatproof stainless steel base with sound elimination coating and anti-vibration pad.
- Slim overflow hole with anti-blocking Corian® strip, innovative built in overflow system with >0.20L/S flow rate and no other plastic or metal components required inside the sink. **Note the overflow position is fixed for ex-stock items.**
- Adjustable rigid waste kit included.
- Available ex stock in Glacier White, Cameo White and Designer White. Other Corian® kitchen colours available to order.
- Corian® Avante® sinks carry the manufacturer's 10 year limited installed warranty.

CAV-SS-27

214 x 442 x 131mm
R15



SINK 27
AVAILABLE FROM
SEPTEMBER
2015

NOTE: Avante® sinks are not guaranteed to colour match with a worktop of the same Corian® colour.

CD (UK) LTD

Wakefield House, Gildersome Spur, Morley, Leeds LS27 7JZ.

Telephone: 0113 201 2240 Fax: 0113 253 0717

Direct Customer Service: 0113 201 2244

web: www.cdukltd.co.uk email: info@cdukltd.co.uk



Follow us on twitter at
<http://twitter.com/cdukltd>



Certificate No. 6796