

Public Spaces

In areas occupied by thousands daily, it's essential to use a surface material that's as durable as it is eye-catching, and as easy to repair as it is to personalise. Staron® more than meets the challenge, providing architects and designers with a highly versatile option that boasts impressive fire-retardant and bomb-blast safety credentials.



Higher standards

As the tallest building in the area, Vienna Twin Tower commands attention from afar. The interior is no less impressive, thanks to a sharply designed Staron® information desk finished with carved letter detail.



Wonderwalls

Thermoformed Staron® panels enable you to achieve a contemporary minimalist aesthetic with maximum ease. Inset lighting, long flowing curves and a seamless finish can all be achieved, resulting in an eye-catching finish where walls and ceilings effortlessly become one. Create eye-catching feature walls and draw attention to logos through the use of backlighting.

1 / Samsung Creativity Institute Chagjo Gwan, South Korea.

2 / Sky Lounge, Dongdaemun Design Plaza & Park, South Korea. *Design: Zaha Hadid Architects.*

3 / Samsung Human Resource Development Institute, South Korea.

4 / Noon Square, South Korea. 5 / Berlin Olympic Stadium Visitor Centre, Germany. *Design: Akay von Oppen, Germany.*



6



7



8



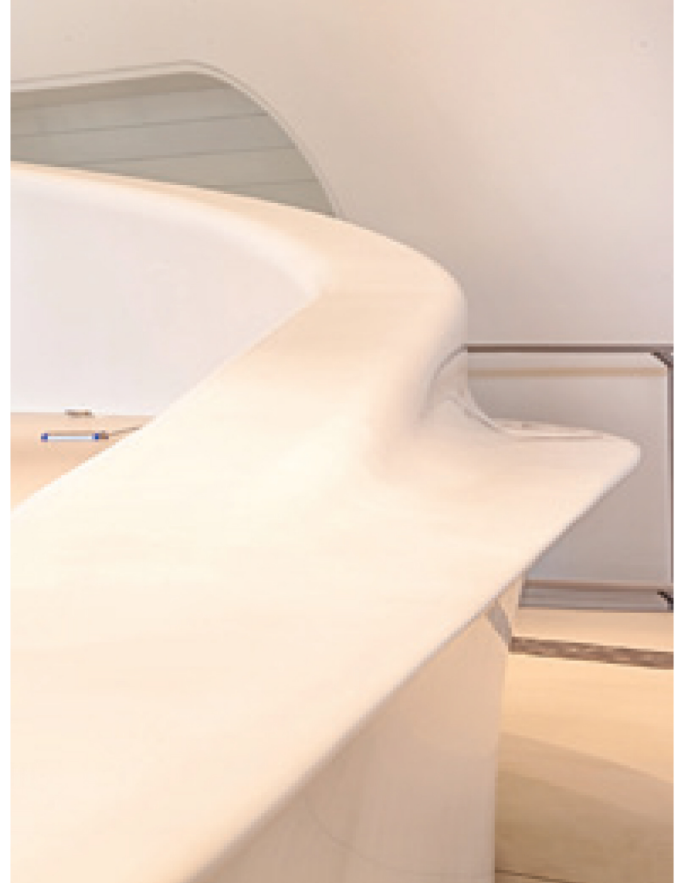
9



10

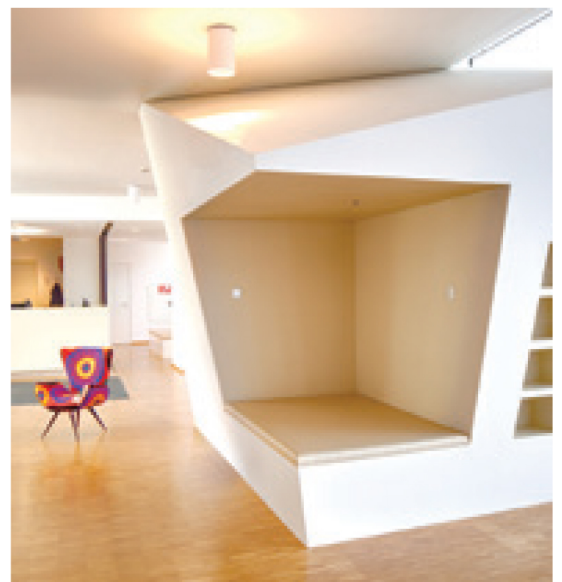
Making the functional fantastic

Whether a stadium or station, airport or lobby, public spaces have a responsibility to be both safe and environmentally sound. They need to be hardwearing too, able to withstand thousands of people passing through every day. Staron® provides a versatile option that can be carved, illuminated and thermoformed to crowd-pleasing effect.



Trusted to deliver

The creative freedom Staron® provides has long made it a go-to option for world-renowned architects. Such was the case when Zaha Hadid Architects designed the new Library and Learning Centre at the Vienna University of Economics, where it was used to create an information desk that forms a key focal point at the centre.



A new school of thought

In an age where encouraging students to learn has never been more challenging due to endless distractions from smartphones, clever design has a Milestone Vienna campus you'll find an array of creative communal areas and private learning spaces constructed from Staron® that let in natural light and create a warm, inviting and effective learning environment.

E





Bristol Airport, UK

Nearly nine million passengers pass through Bristol Airport every year – most with heavy luggage in hand. So when designing the airport's new Silverzone parking terminal desks, a practical solution was required that could both withstand a daily barrage of baggage blows and help speed up the checking in and out process.

Sanded Dover Staron® was selected for the large pick-up desk, resulting in a hardwearing, yet inviting piece of seamless design that immediately attracted the attention of passengers looking to collect or check in their vehicle. Another key reason the airport chose Staron® was the fact it can be polished to look like new at minimal cost, effectively ensuring the Silverzone parking terminal would always deliver a positive first, or last, impression.

Alongside the impressive desk, Staron® also appears at the airport in the form of a series of imposing signage totems that each resemble a block of ice. Chosen again because of its exceptional durability and waterproof design, the ice blocks quickly became a talking point with passengers.





Passenger peace of mind

Understandably, few buildings have more rigorous compliance requirements than an airport. When Heathrow Airport required a material for use across over 500 check-in desks, counters and security stations, Staron® more than met the challenge, offering a solution that ensured compliance with HAL Design Performance Standard for Airline Desks, ASIAD and the latest fire ratings.



Top flight

Evoking the feeling of a luxury hotel, the GVK Premium Class Lounge at Mumbai Airport provides passengers flying premium with a relaxing respite. Integral to the intricate design are a series of highly patterned privacy screens made from Bright White Staron® that allow light and air to flow freely into the lounge.



Enjoy the view

When on the 123rd floor of the world's sixth tallest skyscraper, the views outside naturally take priority. However, it could be argued the view inside South Korea's Lotte Tower is no less impressive. A series of translucent Staron® counters encircle the interior, providing a subtle source of light that contrasts beautifully with the panoramic sunsets visitors travel miles to enjoy.



A stroke of genius

While swimming pools are primarily a place for fun, fitness and improving wellbeing, they can also provide a hotbed for bacteria. Due to its seamless design, Staron® provides an exceptionally sterile material that can be easily washed down, making it an ideal choice for leisure areas. At the Blaubeuren indoor pool, Staron® has been used to clad over 40 metres of heated benches and create a modern lifeguard desk.

Indoor Pool, Germany.

Architect: Architekturbüro Gebhardt. Construction: Mohring. Photo: Webvisio Mediadesign.



Enlightened design

Mikvah baths are key within the Jewish faith. While primarily used to achieve ritual purity, as with any bath, they also have a responsibility to keep bathers safe from bacteria and harm. In this example, Pure White Staron® was used to create a calming wet room and Mikvah that could be easily kept clean at all times.





Smethwick Mosque, UK

Used by thousands of worshippers weekly, Smethwick's Jamia Masjid Anwar Ul Uloom Mosque required a number of new design installations that would further enhance this place of holy prayer. Primarily, this is comprised of a new foot washing room and an eye-catching fountain in the lobby area featuring glowing religious calligraphy.

Staron® was used for both projects thanks to its waterproof quality and ability to be easily thermoformed to create intricate shapes. The natural stone appearance of Staron® Genesis was chosen for the troughs, stools and walls in the washing room, which featured a highly decorative inlay in contrasting Staron® Aspen Sky.

The dramatic fountain provided the challenge of creating an entirely watertight construction that could also cleverly house a pump.





Due to both its strength and stain-resistance, the same Staron® surfaces were also used for additional interpretation tables located around the skeleton.

Natural History Museum, UK

When London's Natural History Museum had the opportunity to display the world's most complete Stegosaurus skeleton, no risks were taken. After all, this 900kg behemoth took 150 million years to find. A design solution was therefore required that would raise the installation above ground level to prevent accidental collisions, while also hide the supportive steel frame from view.

An outer plinth constructed from Staron® was created that beautifully complemented, and cleverly disguised, the complex steel frame. As the inner frame sat on bespoke shock-absorbent feet, it was also essential that the outer plinth have no contact with it at any point.

Inspired by the Wyoming heritage of the Stegosaurus, two shades of Staron® were used for the outer plinth layers – Staron® Sanded Tundra and Sanded Stratus. Each thermoformed layer was then precisely CNC cut and fabricated to create a flawless curved structure capable of withstanding 900kg of bones and metal.